



PM Stepping Motor

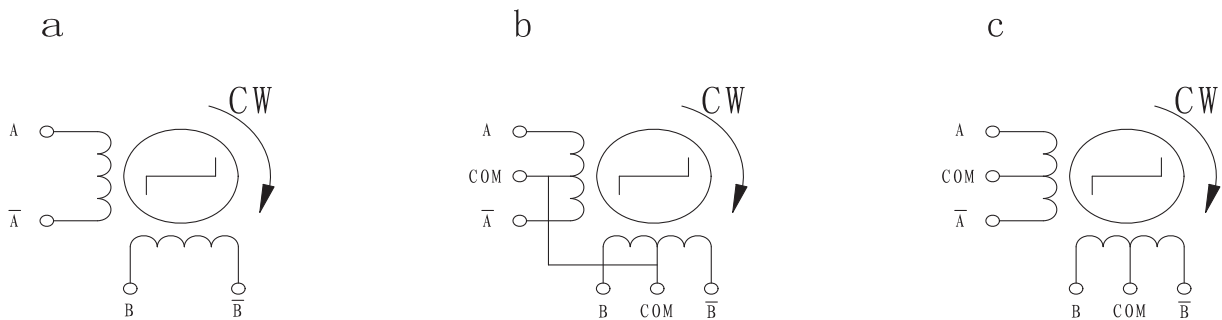
10BY Series



● Specifications

| Model | Step Angle (Deg.) | No. of Phase | Voltage (V) | Current (A) | Resistance (Ω) | Inductance (mH) | No-load Starting Frequency (pps) | Pull-in Torque (g.cm) | Detent Torque (g.cm) | Holding Torque (g.cm) | Leads | Wdg | Fig |
|-------------|-------------------|--------------|-------------|-------------|-------------------------|-----------------|----------------------------------|-----------------------|----------------------|-----------------------|------------|-----|-----|
| 10BY20L03 | 18 | 2 | 3.3 | 0.22 | 15 | 2.4 | 1200 | 6 | 10 | 16.3 | | a | 1 |
| 10BY20L06-1 | 18 | 2 | 3.3 | 0.22 | 15 | 2.4 | 1200 | 5.8 | 10 | 16.3 | | a | 2 |
| 10BY20L022 | 18 | 2 | 12 | 0.2 | 26 | 3.8 | 1800 | 12 | 10 | 20 | UL1571 28# | a | 3 |

● Wiring Diagram



● Dimensions

Fig1

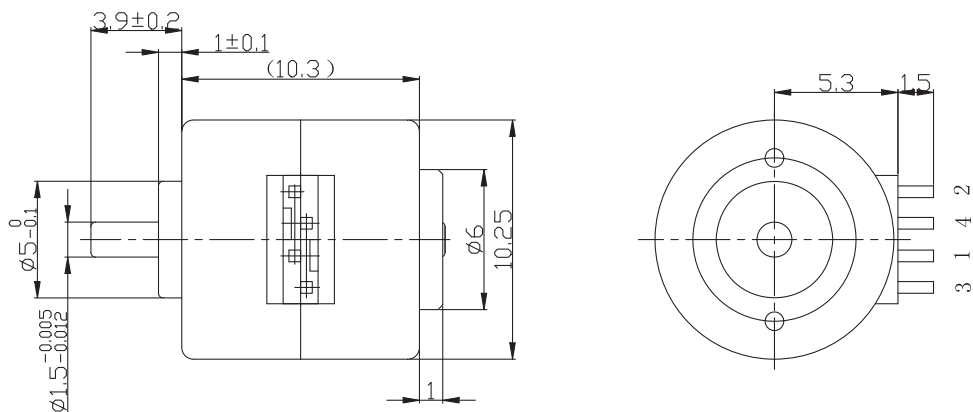


Fig2

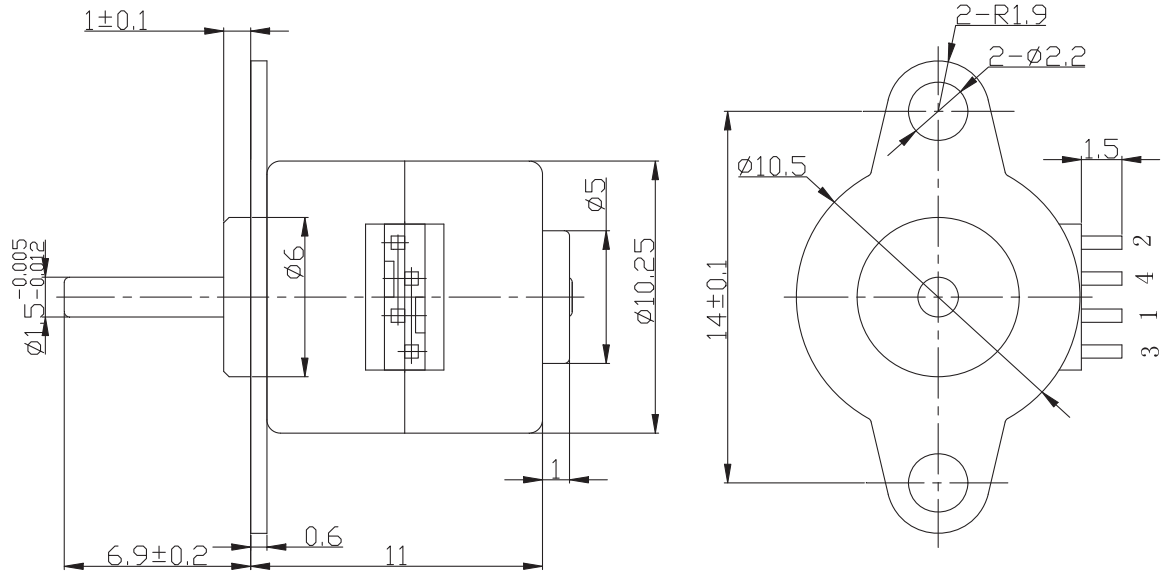
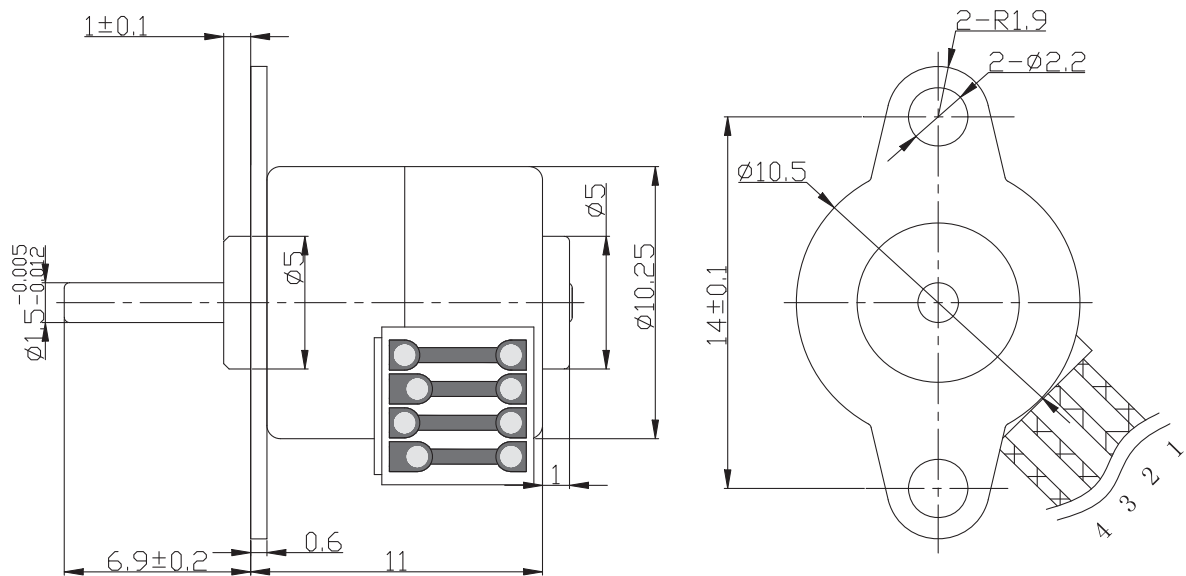


Fig3

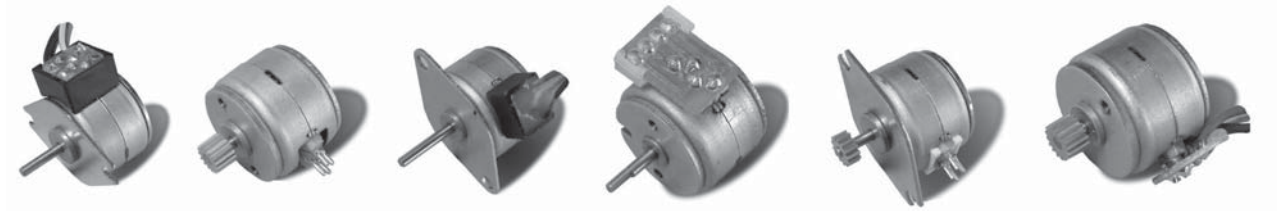


*This motor can be designed & manufactured with customized request.



PM Stepping Motor

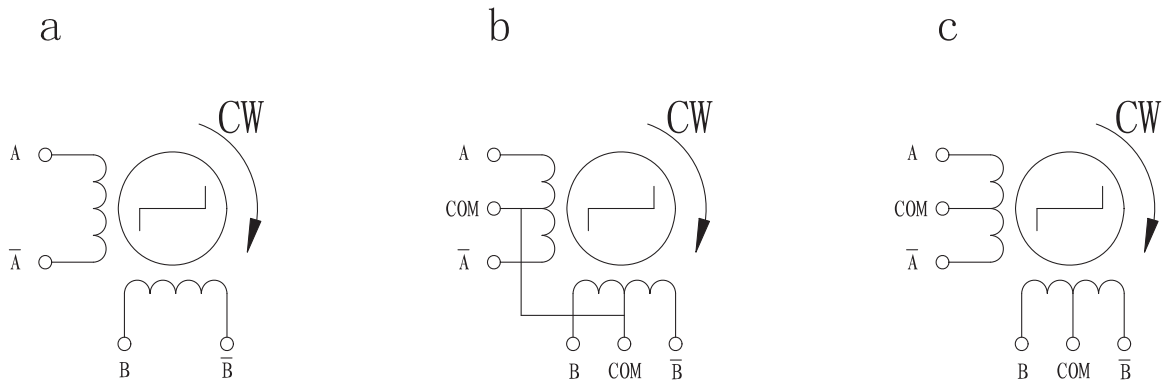
15BY Series



● Specifications

| Model | Step Angle (Deg.) | No. of Phase | Voltage (V) | Current (A) | Resistance (Ω) | Inductance (mH) | No-load Starting Frequency (pps) | Pull-in Torque (g.cm) | Detent Torque (g.cm) | Holding Torque (g.cm) | Leads | wdg | Fig |
|------------------|-------------------|--------------|-------------|-------------|----------------|-----------------|----------------------------------|-----------------------|----------------------|-----------------------|-------------|-----|-----|
| 15BY20L01 | 18 | 2 | 5 | 0.5 | 10 | 2 | 1400 | 14 | 10 | 27 | | a | 1 |
| 15BY20L02 | 18 | 2 | 12 | 0.065 | 190 | 37 | 900 | 5 | 16 | 40 | | a | 2 |
| 15BY20L08 | 18 | 2 | 7.2 | 0.15 | 50 | 9.5 | 1100 | 6 | 10 | 25 | UL 1571 30# | a | 3 |
| 15BY20L018 | 18 | 2 | 12 | 0.04 | 300 | 58 | 1200 | 3 | 10 | 40 | | a | 4 |
| 15BY20L017 | 18 | 2 | 5 | 0.33 | 15 | 6 | 950 | 8.5 | 5 | 25 | | a | 5 |
| 15BY20L013-03A-1 | 18 | 2 | 12 | 0.4 | 30.5 | 6 | 1200 | 9 | 10 | 35 | UL 1571 28# | a | 6 |
| 15BY20L091 | 18 | 2 | 5 | 0.33 | 15 | 3 | 950 | 8.5 | 10 | 25 | UL 1571 28# | a | 7 |
| 15BY20L096 | 18 | 2 | 5 | 0.17 | 30 | 6.2 | 700 | 5 | 20 | 25 | UL 1571 30# | a | 8 |

● Wiring Diagram



● Dimensions

Fig1

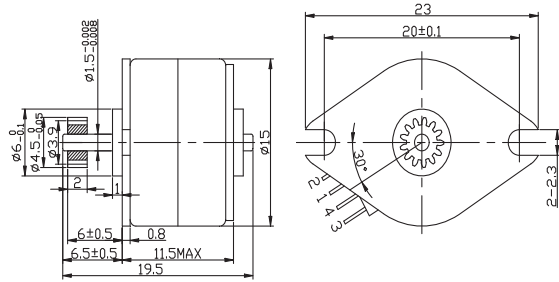


Fig2

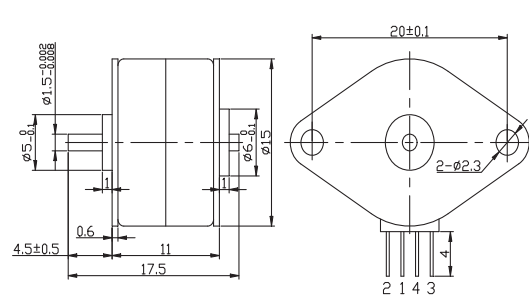


Fig3

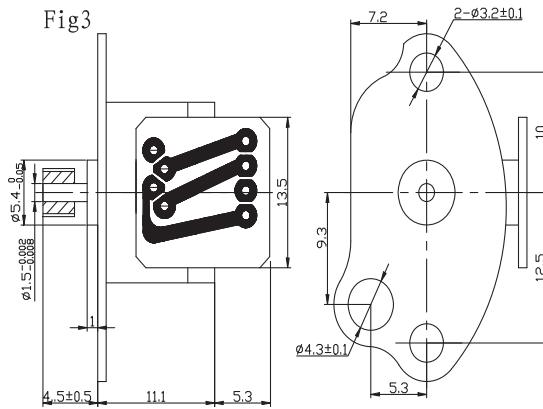


Fig4

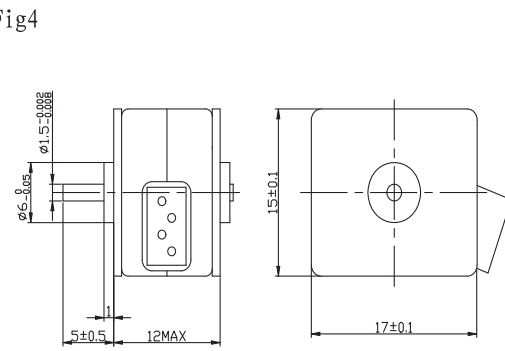


Fig5

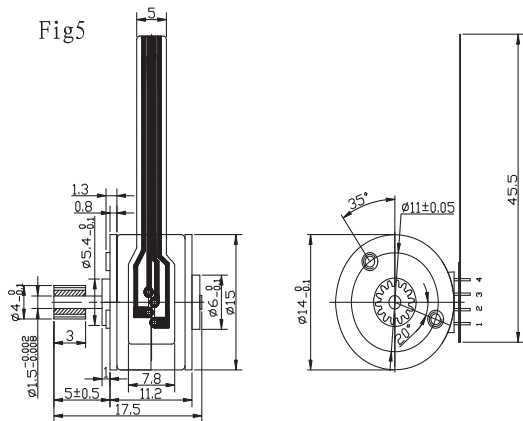


Fig6

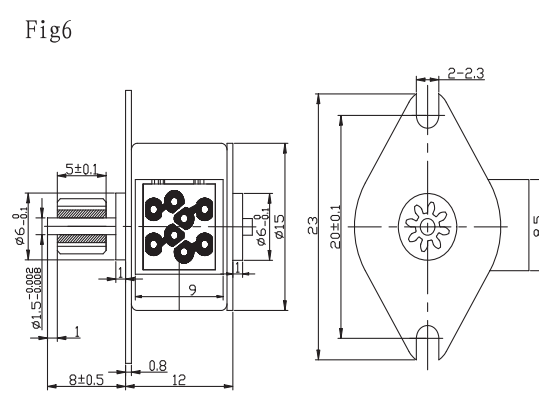


Fig7

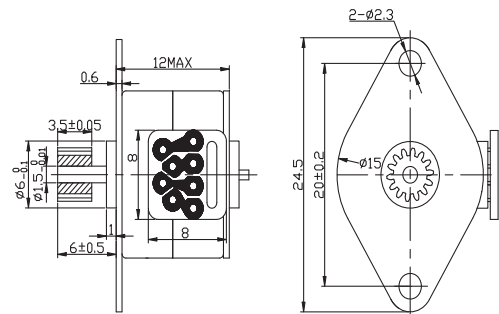
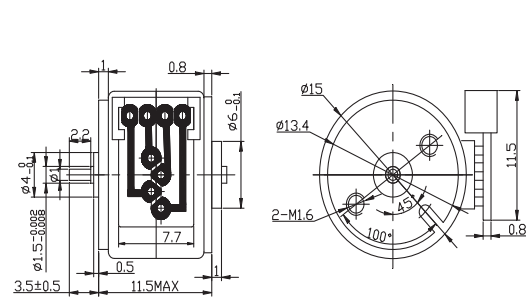


Fig8



*This motor can be designed & manufactured with customized request.



PM Stepping Motor

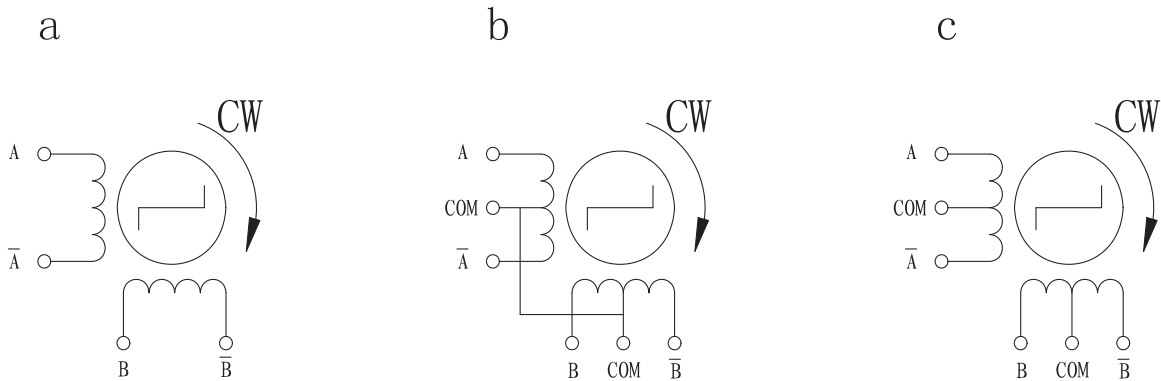
20BY Series



● Specifications

| Model | Step Angle (Deg.) | No. of Phase | Voltage (V) | Current (A) | Resistance (Ω) | Inductance (mH) | No-load Starting Frequency (pps) | Pull-in Torque (g.cm) | Detent Torque (g.cm) | Holding Torque (g.cm) | Leads | Wdg | Fig |
|--------------|-------------------|--------------|-------------|-------------|-------------------------|-----------------|----------------------------------|-----------------------|----------------------|-----------------------|-------------|-----|-----|
| 20BY20L01 | 18 | 2 | 5 | 0.5 | 10 | 4.3 | 600 | 10 | 20 | 60 | UL 1061 28# | a | 1 |
| 20BY20L02 | 18 | 2 | 5 | 0.39 | 13 | 7.4 | 500 | 5 | 20 | 40 | | a | 2 |
| 20BY20L014A | 18 | 4 | 12 | 0.4 | 30 | | 850 | 25 | 20 | 55 | UL 1571 28# | c | 3 |
| 20BYUAG2 | 18 | 4 | 12 | 0.07 | 170 | 42.6 | 500 | 10 | 10 | 35 | UL 2651 28# | b | 4 |
| 20BY20B01 | 18 | 2 | 12 | 0.08 | 280 | 81.7 | 800 | 13 | 20 | 90 | UL 1061 28# | a | 5 |
| 20BY20L023A | 18 | 2 | 12 | 0.69 | 17.5 | 10 | 1150 | 27.5 | 10 | 125 | UL 1061 28# | a | 6 |
| 20BY20Y-039A | 18 | 2 | 5 | 0.25 | 20 | 10.5 | 370 | 15 | 10 | 65 | UL 1095 28# | a | 7 |

● Wiring Diagram



● Dimensions

Fig1

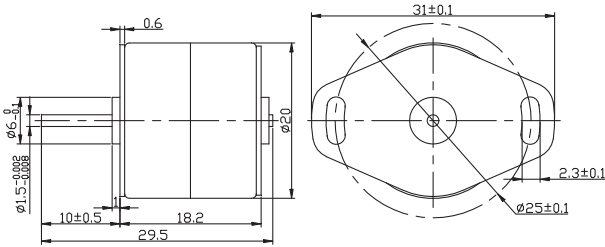


Fig2

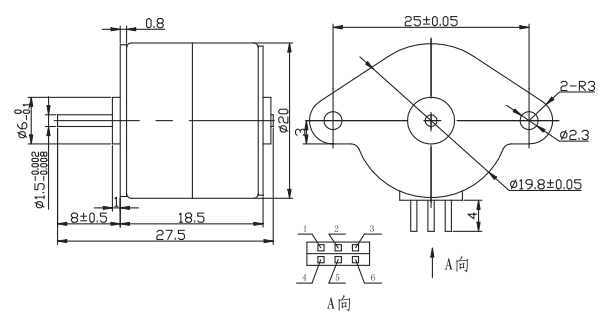


Fig3

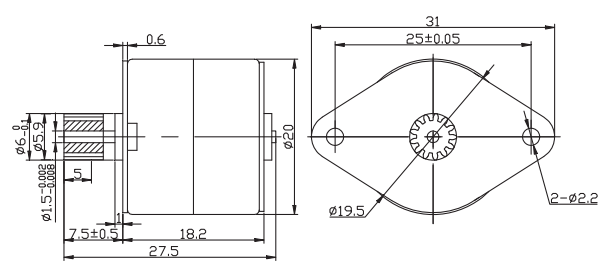


Fig4

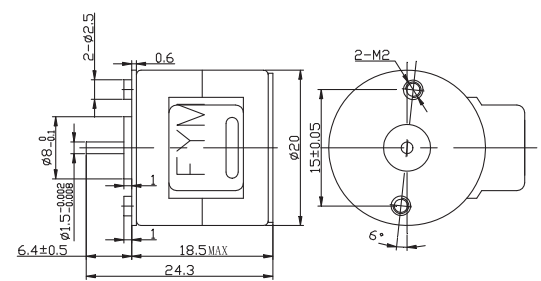


Fig5

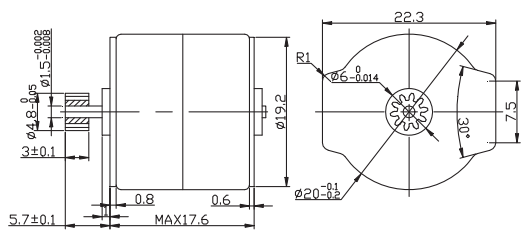


Fig6

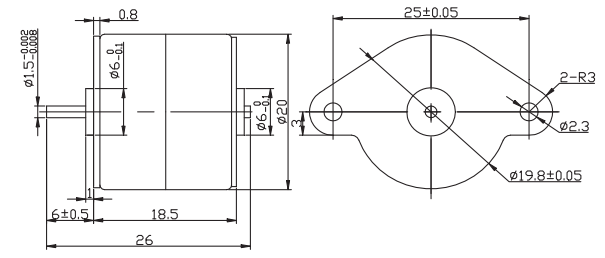
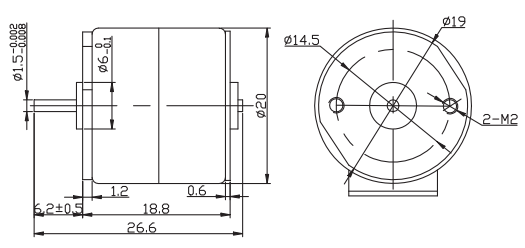


Fig7



*This motor can be designed & manufactured with customized request.



PM Stepping Motor

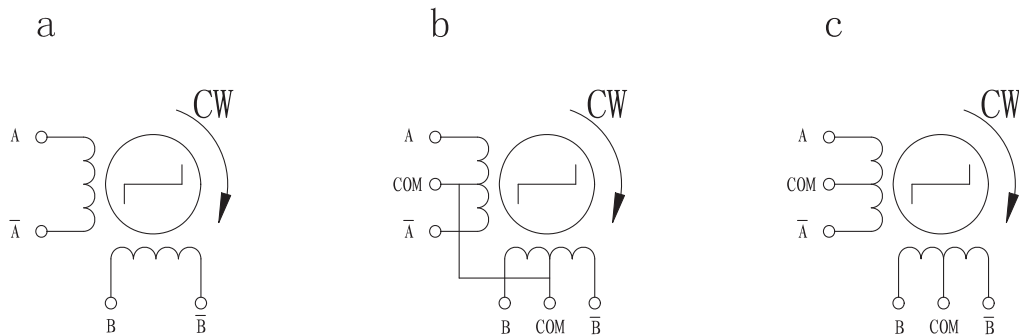
25BY Series



● Specifications

| Model | Step Angle (Deg.) | No. of Phase | Voltage (V) | Current (A) | Resistance (Ω) | Inductance (mH) | No-load Starting Frequency (pps) | Pull-in Torque (g.cm) | Detent Torque (g.cm) | Holding Torque (g.cm) | Leads | Wdg | Fig |
|------------|-------------------|--------------|-------------|-------------|----------------|-----------------|----------------------------------|-----------------------|----------------------|-----------------------|-------------|-----|-----|
| 25BY24L01 | 15 | 4 | 9 | 0.45 | 20 | 14.75 | 600 | 20 | 60 | 135 | UL 1061 28# | c | 1 |
| 25BY24L02 | 15 | 4 | 12 | 0.4 | 30 | 6 | 580 | 40 | 75 | 130 | UL 1061 28# | c | 2 |
| 25BY24L040 | 15 | 2 | 24 | 0.275 | 16 | 9.46 | 870 | 40 | 70 | 125 | / | a | 3 |
| 25BY48B02 | 7.5 | 4 | 12 | 0.375 | 32 | 5.5 | 850 | 50 | 30 | 130 | UL 1061 28# | c | 4 |
| 25BY48B040 | 7.5 | 2 | 5 | 0.25 | 20 | 9.3 | 580 | 20 | 30 | 90 | UL 1061 28# | a | 5 |
| 25BY48L01 | 7.5 | 4 | 3 | 0.3 | 10 | 2.1 | 700 | 15 | 45 | 90 | UL 1061 28# | c | 6 |
| 25BY48L029 | 7.5 | 4 | 24 | 0.4 | 60 | 11.6 | 950 | 60 | 50 | 200 | UL 1061 28# | c | 7 |
| 25BY48B031 | 7.5 | 2 | 12 | 0.03 | 400 | 168 | 400 | 5 | / | 50 | UL 1007 26# | a | 8 |
| 25Y48Y-02 | 7.5 | 2 | 5 | 0.5 | 10 | 5.6 | 840 | 45 | 40 | 150 | UL 1061 28# | a | 9 |
| EDM1 | 7.5 | 4 | 12 | 0.08 | 150 | 31 | 550 | 50 | 40 | 85 | / | c | 10 |

● Wiring Diagram



● Dimensions

Fig1

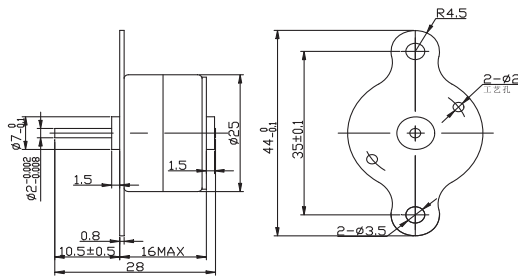


Fig2

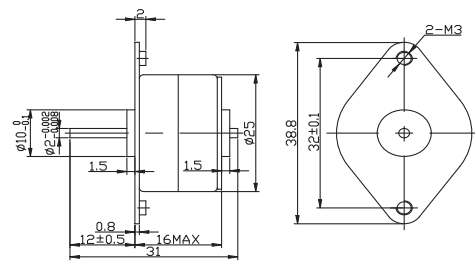


Fig3

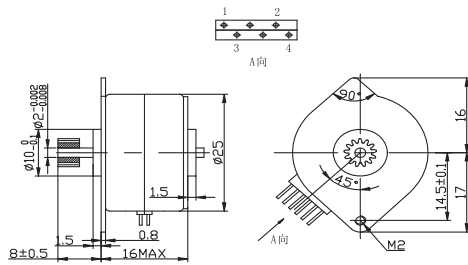


Fig4

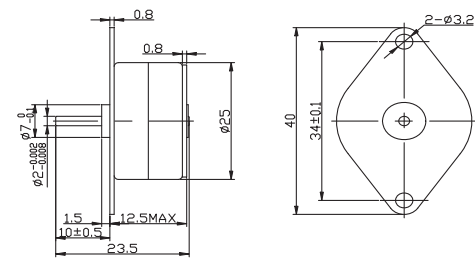


Fig5

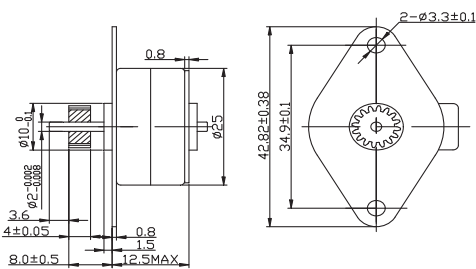


Fig6

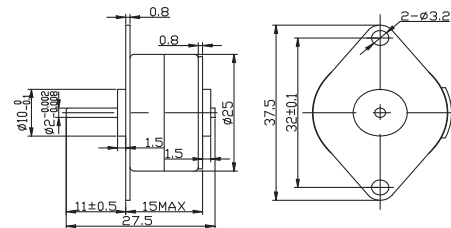


Fig7

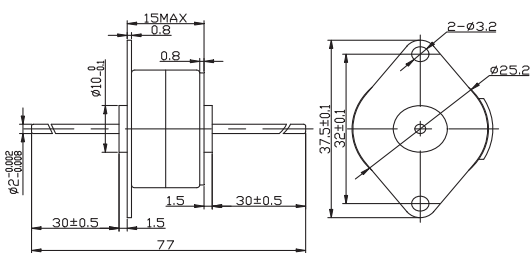


Fig8

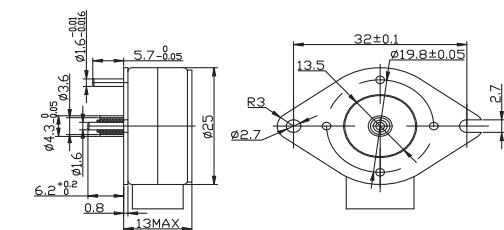


Fig9

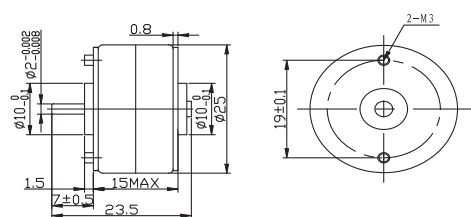
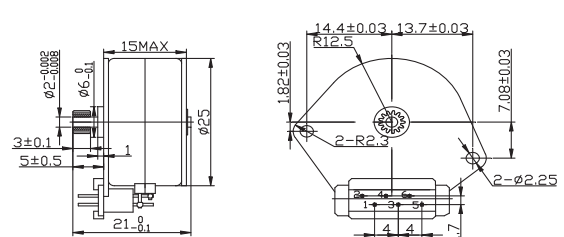


Fig10



*This motor can be designed & manufactured with customized request.



PM Stepping Motor

35BY Series

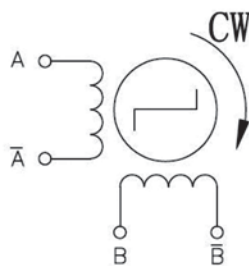


● Specifications

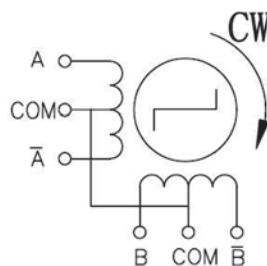
| Model | Step Angle (Deg.) | No. of Phase | Voltage (V) | Current (A) | Resistance (Ω) | Inductance (mH) | No-load Starting Frequency (pps) | Pull-in Torque (g.cm) | Detent Torque (g.cm) | Holding Torque (g.cm) | Leads | Wdg | Fig |
|---------------|-------------------|--------------|-------------|-------------|-------------------------|-----------------|----------------------------------|-----------------------|----------------------|-----------------------|-------------|-----|-----|
| 35BY24L01 | 15 | 4 | 24 | 0.282 | 85 | 36.5 | 370 | 80 | 150 | 450 | UL 1007 26# | b | 1 |
| 35BY24L022 | 15 | 2 | 12 | 0.8 | 15 | 13.5 | 450 | 150 | 150 | 550 | UL 1007 26# | a | 2 |
| 35BY48L01 | 7.5 | 2 | 12 | 0.2 | 60 | 65 | 350 | 100 | 125 | 550 | UL 1007 26# | a | 1 |
| 35BY48L09 | 7.5 | 4 | 18 | 1.3 | 13.5 | 9.5 | 580 | 120 | 125 | 800 | UL 1007 26# | b | 3 |
| 35BY48L016 | 7.5 | 4 | 24 | 0.2 | 120 | 275 | 350 | 70 | 125 | 550 | UL 1007 26# | b | 4 |
| 35BY48L037 | 7.5 | 4 | 24 | 0.2 | 118 | 270 | 350 | 65 | 110 | 520 | UL 1061 28# | b | 5 |
| 35BY48L059 | 7.5 | 4 | 24 | 0.5 | 5.5 | 3.4 | 390 | 185 | 130 | 650 | UL 1007 26# | b | 6 |
| 35BY48S01 | 7.5 | 2 | 5 | 0.71 | 7 | 6.3 | 500 | 60 | 50 | 250 | UL 1007 26# | a | 7 |
| 35BY48S011 | 7.5 | 2 | 5 | 0.4 | 12.5 | 10.5 | 380 | 110 | 75 | 420 | UL 1007 26# | a | 8 |
| 35BY48S015 | 7.5 | 2 | 5 | 0.67 | 7.5 | 5.2 | 400 | 65 | 60 | 400 | UL 1007 26# | a | 9 |
| 35BY48S015-06 | 7.5 | 2 | 24 | 0.65 | 7.2 | 4.85 | 850 | 190 | 80 | 450 | UL 1007 26# | a | 10 |

● Wiring Diagram

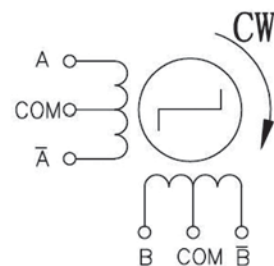
a



b



c



● Dimensions

Fig1

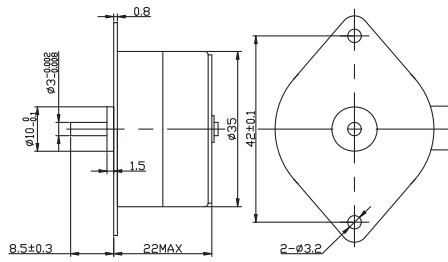


Fig2

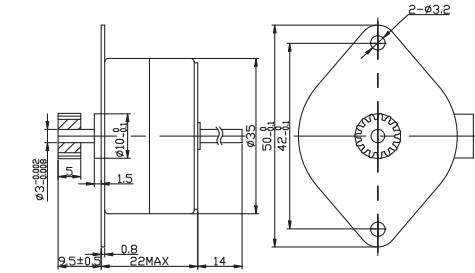


Fig3

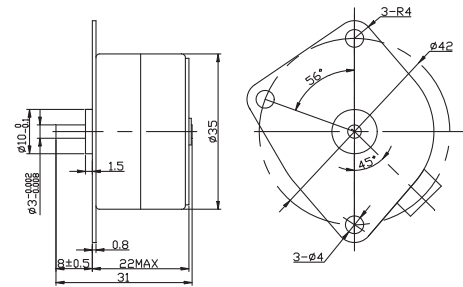


Fig4

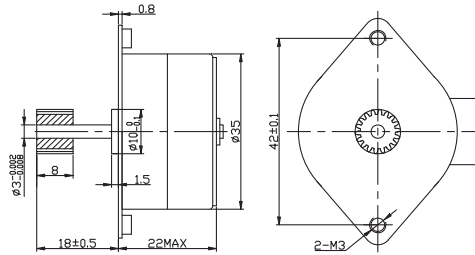


Fig5

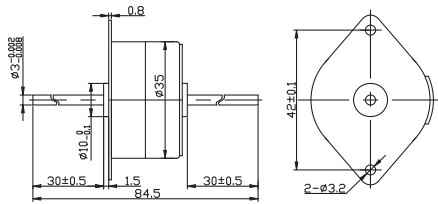


Fig6

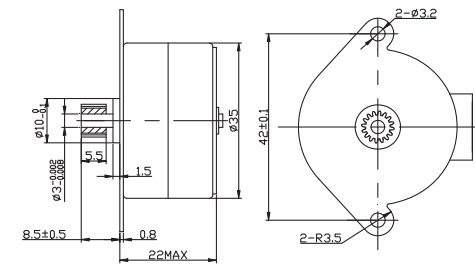


Fig7

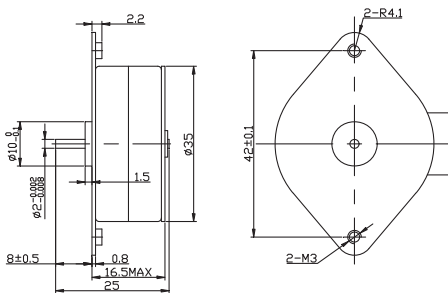


Fig8

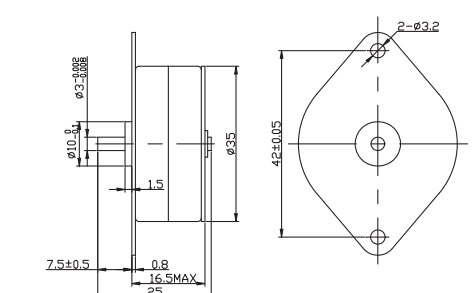


Fig9

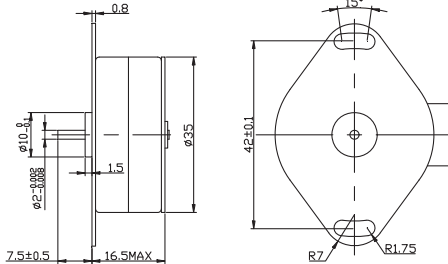
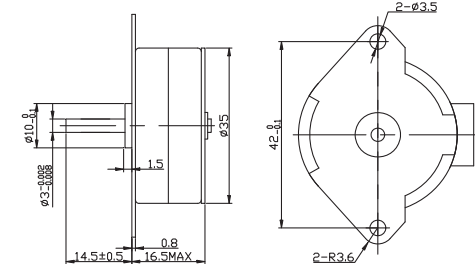


Fig10

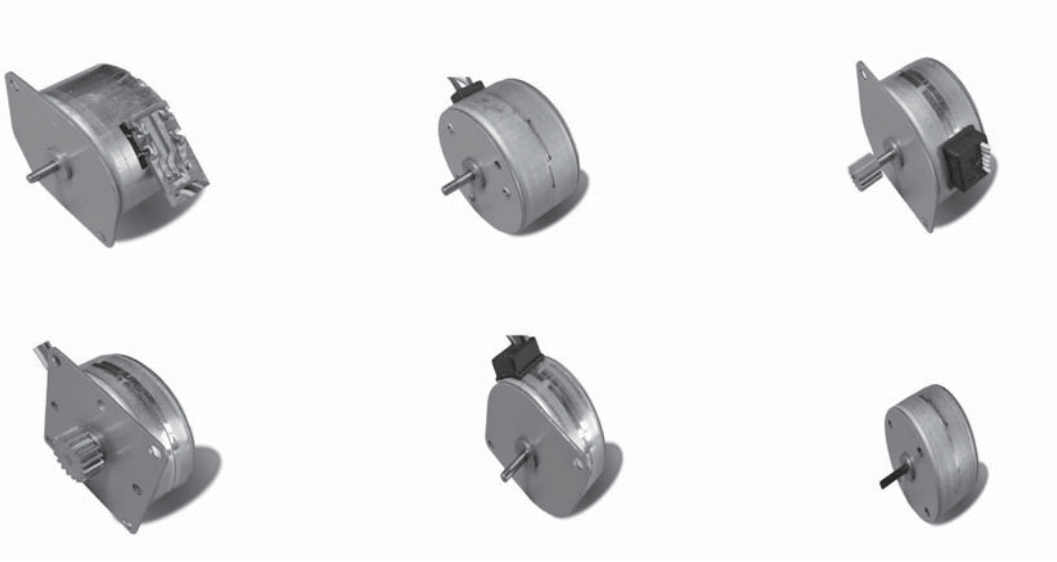


*This motor can be designed & manufactured with customized request.



PM Stepping Motor

42BY Series

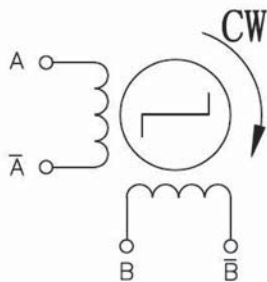


● Specifications

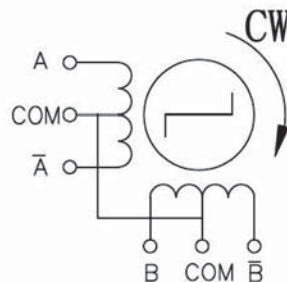
| Model | Step Angle (Deg.) | No. of Phase | Voltage (V) | Current (A) | Resistance (Ω) | Inductance (mH) | No-load Starting Frequency (pps) | Pull-in Torque (g.cm) | Detent Torque (g.cm) | Holding Torque (g.cm) | Leads | Wdg | Fig |
|--------------|-------------------|--------------|-------------|-------------|----------------|-----------------|----------------------------------|-----------------------|----------------------|-----------------------|-------------|-----|-----|
| 42BY48L01 | 7.5 | 4 | 12 | 0.18 | 70 | 47.9 | 280 | 60 | 125 | 500 | UL 1007 26# | c | 1 |
| 42BY48L09 | 7.5 | 4 | 9 | 0.58 | 15.5 | 11.1 | 530 | 150 | 125 | 800 | UL 1007 26# | b | 2 |
| 42BY48L111-2 | 7.5 | 2 | 24 | 0.6(恒流) | 5.8 | 9.5 | 750 | 450 | 280 | 700 | UL 2468 26# | a | 3 |
| 42BY48H01 | 7.5 | 4 | 12 | 0.25 | 48 | 37 | 300 | 80 | 125 | 550 | UL 1007 26# | c | 4 |
| 42BY48S01 | 7.5 | 4 | 12 | 0.3 | 40 | 22 | 350 | 70 | 100 | 550 | UL 1007 26# | b | 5 |
| 42BY48S011 | 7.5 | 4 | 12 | 0.21 | 57 | 30.5 | 310 | 95 | 100 | 650 | UL 1007 26# | b | 6 |
| 42BY96S-10 | 3.75 | 2 | 5 | 0.42 | 12 | 12 | 350 | 160 | 110 | 500 | UL 1007 28# | a | 7 |
| 42BY100S-03 | 3.6 | 4 | 12 | 0.16 | 75 | 37.7 | 380 | 14 | 60 | 420 | UL 1061 26# | c | 8 |

● Wiring Diagram

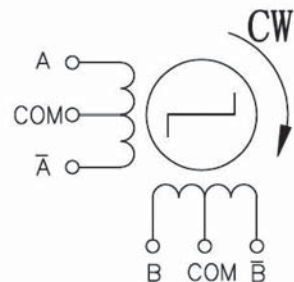
a



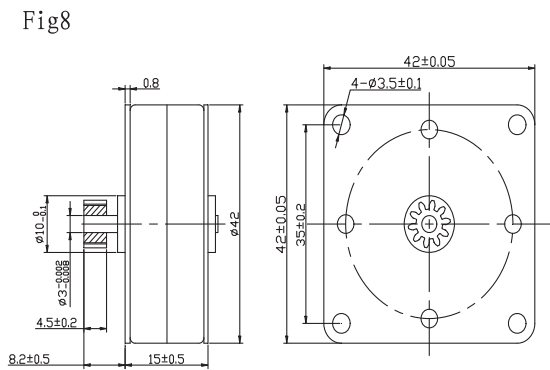
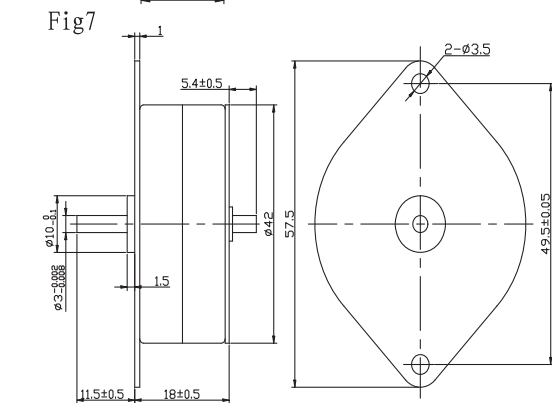
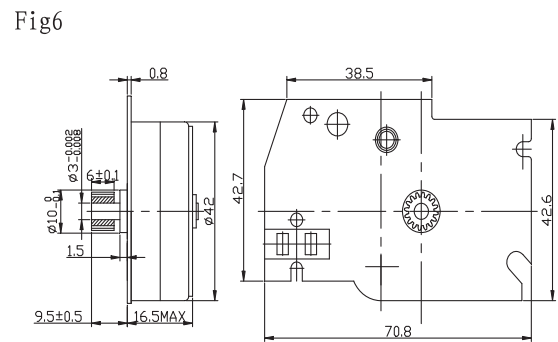
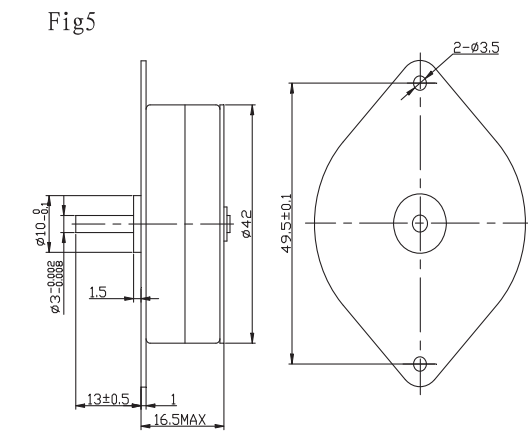
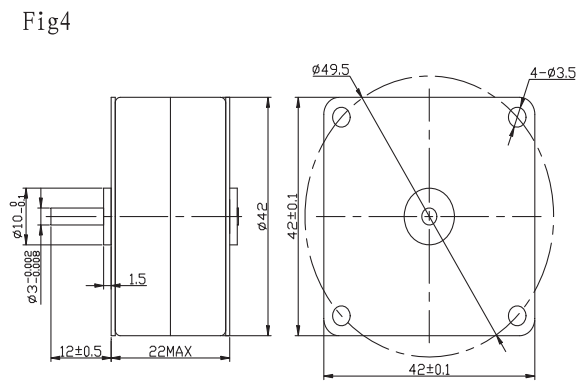
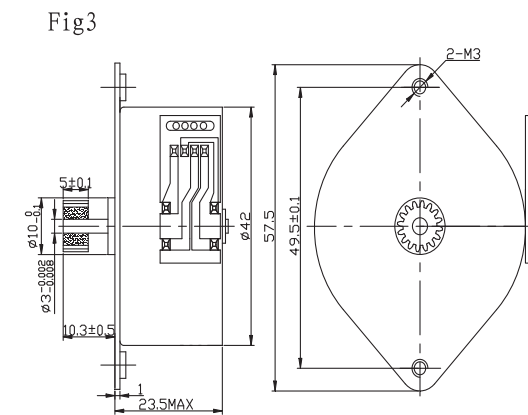
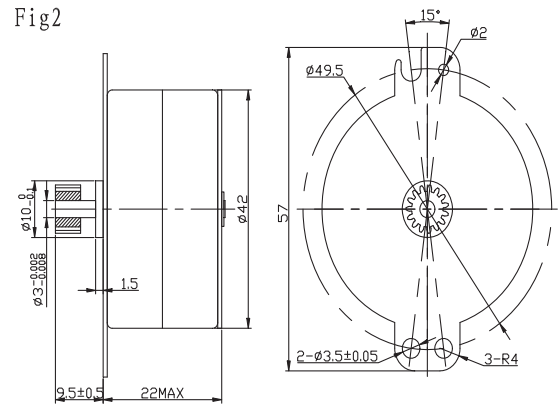
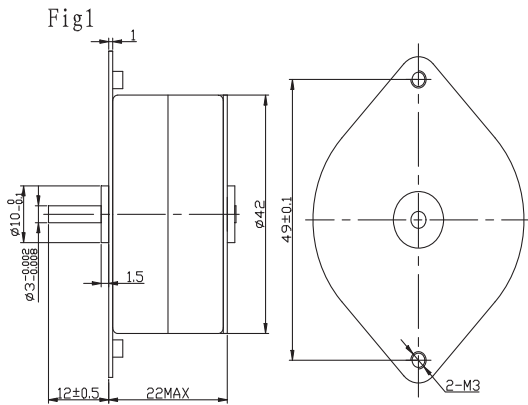
b



c



● Dimensions



*This motor can be designed & manufactured with customized request.